

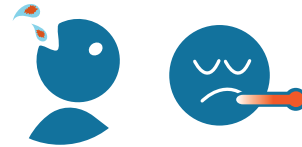
MAKE A HEALTHY

SPLASH!

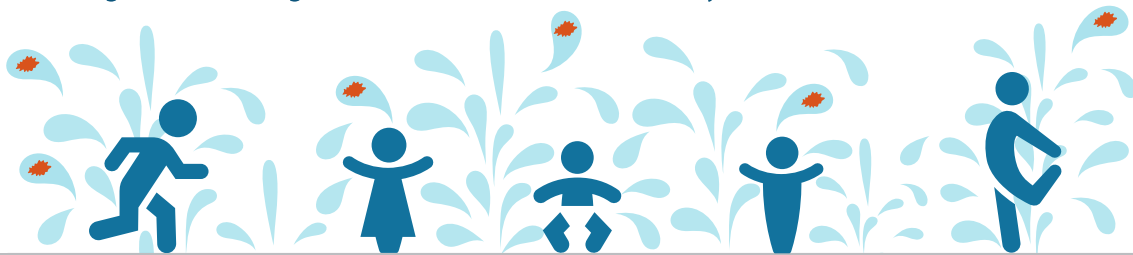
Swallowing water in interactive fountains, splash pads, and spray parks might make you sick.



Germ can get into the water through poop coming out or washing off our bodies.



Swallowing water containing germs can make you sick with diarrhea.



Keep pee and poop OUT of the water.

DO:



- Stay out of the water if you have diarrhea.
- Take bathroom breaks every 60 minutes.



- Check diapers every 30-60 minutes and change diapers away from the water.

DON'T:



DON'T drink the water.



DON'T sit on the water jets.



U.S. Department of Health and Human Services
Centers for Disease Control and Prevention

SPLASH HEALTHY!
www.cdc.gov/healthyswimming



MESA COUNTY PUBLIC HEALTH

