

Wound Care

Step 1: Bandage



Wound on finger

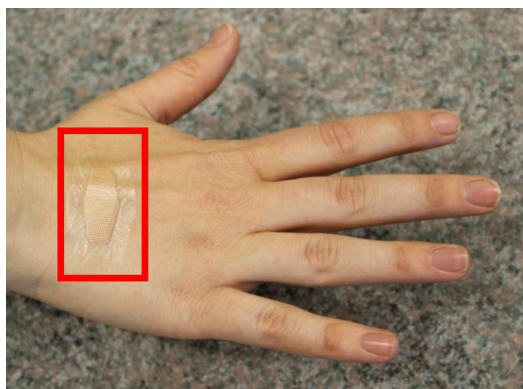
Step 2: Cover with impermeable layer



Step 3: Wash hands and cover with a glove

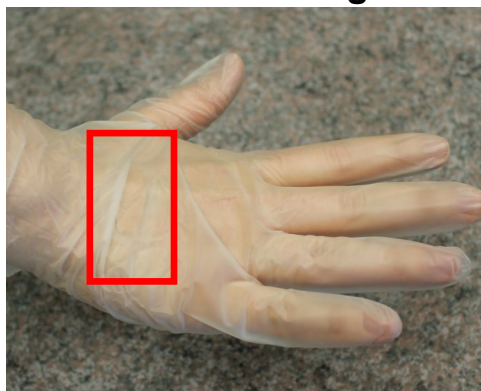


Step 1: Waterproof bandage



Wound on hand

Step 2: Wash hands and cover with a glove



Bandage and supplies are stored _____.

Notify a manager of any wounds.



**MESA COUNTY
PUBLIC HEALTH**
Working Together for a Healthy Community

For additional food safety resources go to

www.health.mesacounty.us

(970) 248-6900